



# 2011 ULM Softball Game Notes

## 2011 Schedule,

FEBRUARY DATE	OPPONENT	TIME (CT)
11	(1) S.E. MISSOURI STATE	W, 11-3 (5)
	(1) NORTHWESTERN STATE	W, 8-0 (5)
12	(1) S.E. MISSOURI STATE	W, 6-1
	(1) EASTERN ILLINOIS	W, 2-1
13	(1) EASTERN ILLINOIS	L, 0-1
	(1) INDIANA STATE	W, 9-0 (6)
18	(2) vs Sam Houston State	W, 11-8
	(2) vs New Mexico State	L, 3-6
19	(2) vs No. 7 Oklahoma	L, 4-14 (5)
	(2) vs Southern Utah	L, 7-10 (8)
20	(2) vs Sam Houston State	W, 5-4 (8)
25	(3) vs Central Arkansas	L, 1-4
26	(3) vs No. 23 Houston	L, 0-8 (5)
	(3) vs Baylor	L, 1-2
27	(3) vs Sam Houston State	W, 5-4 (8)
	(3) vs Houston	L, 0-1
<b>MARCH</b>		
2	at Alcorn State	W, 5-4
4	(4) vs Furman	W, 12-3 (5)
	(4) vs No. 7 Tennessee	L, 1-3
5	(4) vs Georgia Southern	W, 10-5
	(4) vs Dutch National Team (exhib.)	L, 3-4
9	at Stephen F. Austin	L, 3-10
12	* SOUTH ALABAMA (DH)	L, 1-3
		L, 2-5
13	* SOUTH ALABAMA	W, 11-3 (5)
19	*at Troy (DH)	L, 0-3
		W, 6-5
20	*at Troy	W, 7-1
22	CENTENARY	W, 8-0 (5)
23	STEPHEN F. AUSTIN	W, 11-2 (5)
26	*MIDDLE TENNESSEE (DH)	W, 9-8
		W, 5-3
27	*MIDDLE TENNESSEE	W, 15-12
31	NICHOLLS STATE	L, 5-7 (8)
<b>APRIL</b>		
2	*Florida Atlantic (DH)	L, 1-3
		W, 7-6
3	*Florida Atlantic	L, 4-6
9	*FIU (DH)	L, 2-5
		W, 8-7
10	*FIU	W, 1-0
12	at Grambling State	W, 7-0
16	*at North Texas (DH)	W, 7-2 (10)
		L, 1-8
17	*at North Texas	L, 1-2
19	GRAMBLING STATE	W, 8-0 (5)
22	*at Western Kentucky (DH)	L, 5-6
		L, 2-6
23	*at Western Kentucky	L, 6-7
26	at Arkansas (DH)	2 p.m.
28	at McNeese State	5 p.m.
29	ALCORN STATE	4 P.M.
<b>MAY</b>		
7	*UL-LAFAYETTE (DH)	1 P.M.
8	*UL-LAFAYETTE	12 P.M.
11	(5) Sun Belt Tournament	TBA
12	(5) Sun Belt Tournament	TBA
13	(5) Sun Belt Tournament	TBA
14	(5) Sun Belt Tournament	TBA
19	NCAA Regionals	TBA
20	NCAA Regionals	TBA
21	NCAA Regionals	TBA
26	NCAA Super Regional	TBA
27	NCAA Super Regional	TBA
28	NCAA Super Regional	TBA
<b>JUNE</b>		
1-6	College World Series	TBA

### Home games in **BOLD CAPS**

\*Sun Belt Conference Match

(DH) - Double Header

Tournament Legend

(1) ULM Mardi Gras Classic (Monroe, La.)

(2) Troy Cox Classic (Las Cruces, N.M.)

(3) QTI Powers Invitational (Waco, Texas)

(4) Tennessee Classic (Knoxville, Tenn.)

(5) Sun Belt Tournament (Lafayette, La.)



### ULM WARHAWKS

2011 Record..... 25-22  
SBC Record..... 10-11  
Last Week..... 1-3  
All-Time vs. Arkansas ..... 2-8  
Last meeting ..... L, 5-8

### Games 48-49 ULM vs. Arkansas

Date ..... Tues. Apr. 26, 2011

Location ..... Fayetteville, Ark.

Field ..... Bogle Field

First Pitch ..... 2 p.m. (DH)

Live Stats..... ulmwarhawks.com



### ARKANSAS RAZORBACKS

2011 Record..... 12-35  
SEC Record..... 3-20  
Last Week..... 1-1  
All-Time vs. ULM..... 8-2  
Last meeting ..... W, 8-5

### GAME PREVIEW:

ULM and Arkansas will face each other for the first time in four seasons Tuesday, marking the second Southeastern Conference team the Warhawks will play this season. The two programs last met in 2007 at the Arkansas Invitational with the Razorbacks taking two of three games, ULM's only win coming 4-1. The Warhawks have just two wins against the Razorbacks as they trail 2-8 in the all-time series.

### ULM LAST TIME OUT:

The Warhawks picked up a mid-week win over Grambling State Tuesday evening before suffering their first sweep of the season at the hands of Sun Belt Conference foe Western Kentucky over the weekend. ULM lost two of the three games by just one run to drop its second-straight conference series in two weeks.

### A LOOK AT ARKANSAS:

Arkansas brings a 12-35 overall record into Tuesday's doubleheader, including a 3-20 record as a member of the softball powerhouse SEC conference. The Razorbacks split two games last week with 14-2 six inning loss to Memphis and a 2-1 win against No. 3 Georgia before the final two games of the series were rained out. Arkansas has won just two games at home this season with a 2-11 record.

Becca Carden leads the Razorbacks as the only player batting over .300 this season with a .336 average. Carden also leads nearly every offensive category including hits (48), runs (22), home runs (6), RBIS (24), doubles (9) and stolen bases (9). Kim Jones holds a team-low 4.30 ERA and has a team-high 109.0 innings and 95 strikeouts on the season.

### ULM NEWS AND NOTES

- Brianna Love continued to make her mark in the ULM record books this weekend by breaking two records and tying one more. Love hit her 42nd career home run to snap Lori Tande Bruscatto's previous record of 41 Friday evening before nailing her second Saturday to bring her total to 43. She also broke the runs scored record with three runs to total 159 for her career along with tying the single-season home run record of 14.
- ULM has already surpassed its highest record of conference wins since joining the Sun Belt in 2007. The Warhawks currently sit at 10-11 in the league, marking the most Sun Belt conference wins in a single season since ULM won nine games in 2008 and 2010.
- Jessica Olguin has had the biggest turnaround of any Warhawk batter from last season after making the switch from righty to lefty. After batting under .100 the last two seasons including .050 in 2010, Olguin is batting a team second-best .367 and leads in hits with 58. Before this season, Olguin totaled 42 career hits in three seasons.
- Heather Fritz has a team-low 2.62 ERA and has struckout 20 batters in just 26.2 innings pitched this season while allowing only 10 earned runs.
- ULM continues to rank among the best of the nation statistically including sitting 13th in the NCAA in stolen bases per game (1.93) and 58th in scoring (5.19). ULM also ranks 80th in triples per game (0.19).
- Nationally, three Warhawks rank in the top-50 in the NCAA. Stand-out player Brianna Love has top-40 rankings, including 11th in walks per game (0.88), 11th in runs per game (1.16) 28th in stolen bases (0.58), 28th in triples (4), 35th in home runs (12) and 37th in slugging percentage (.803). Janel Salanoa boasts two top-10 rankings, including 10th in sacrifice flies (4.0) and is the fifth-toughest player to strikeout in the nation (42.7) while Katie Girardi ranks 25th in walks per game (0.79).
- Jessica Olguin is the only Warhawk to have four hits in one game this season which happened in two separate occasions. Olguin did it first in a 4-for-4 performance in the second game against Troy Mar. 19. and repeated it after a 4-for-5 effort against Middle Tennessee Mar. 26.
- Coach Rosemary Holloway-Hill is in her 27th season at the helm of the ULM softball program and has amassed a 677-858-3 record for her career at ULM. Holloway-Hill took the Warhawks to the Sun Belt Conference Championship game in 2008 and boasts one All-American all-time in Sarah Dawson. Holloway-Hill also coached Lori Tande Bruscatto who was named to the ULM Athletic Hall of Fame in 2011.

## Media Relations

### ULM MEDIA RELATIONS CONTACT

Rachel Williams  
office: (318) 342-5461  
cell: (386) 852-0349  
fax: (318) 342-5464  
email: willliart@warhawks.ulm.edu

**POSTGAME INTERVIEWS** -- will be conducted at a designated location following a NCAA mandated 10-minute cooling-off period. ULM head coach Rosemary Holloway-Hill and selected players will be made available for interviews upon request. Media requests (at home) and for both ULM and opposing coaches and players should be made to the ULM softball SID. Opponent requests will be forwarded to the visiting SID. The Warhawk softball locker room is closed to the media.

**INTERVIEWS DURING THE WEEK** -- All interview requests must be arranged through Rachel Williams in the ULM Media Relations Office. Please contact Rachel Williams to arrange interviews during the week. Practice is closed, but arrangements can be made in advance if you are planning on shooting B-roll footage. Coach Holloway-Hill and ULM student-athletes are available for interviews on non-game days following practice or through special arrangements with Rachel Williams.

**ULMWARHAWKS.COM** -- All the latest scores, statistics and player information is available by accessing the softball section at ulmwarhawks.com. Game stories, previews, statistics, game notes and advisories will be sent to interested media via e-mail. Live stats for ULM fans are also available online at ulmwarhawks.com.

**ADDITIONAL SERVICES** -- In an effort to serve members of the media, the ULM Media Relations Office will, within reason and to the best of its ability, service all requests. Photographs of student-athletes or coaches will be made available for print or online media outlets unable to shoot a Warhawk basketball game. Photo credits must always read "Photograph courtesy of ulmwarhawks.com."

**RADIO** -- All radio stations wishing to broadcast the ULM Softball Complex should contact the ULM Media Relations Office at least one week prior to the event. Space will be provided for the official radio station of the visiting team; others will be accommodated as space permits. Phone lines must be arranged for all stations in advance.

**GAME NOTES** -- Media members can receive the Warhawk Softball game notes via e-mail by contacting Rachel Williams.

**WE ARE THE ULM WARHAWKS** -- We are ULM. In all references to Warhawk athletics, please use the acronym 'ULM'. The only other acceptable version is the full name of the institution, the University of Louisiana at Monroe. Any other reference, including Louisiana-Monroe, La.-Monroe, UL-Monroe, LMU, or simply Monroe are inaccurate. Refer to all ULM athletic teams as Warhawks including all women's teams. Lady Warhawks or Lady Hawks is not acceptable. Individual players may be referred to as a Warhawk.

### ROUTZON THROWS FIRST CAREER NO-HITTER

Stephanie Routzon threw her first career no-hitter against Grambling State Apr. 19, marking the first for ULM since Kandace Causey's in 2009. The freshman pitcher was just one hit batter away from a perfect game, which she did on the leadoff hitter of the game. She also collected a career-high seven strikeouts in the performance.

### QUICK ON THE TRACKS

ULM has consistently ranked in the top-15 in the nation in stolen bases this season and currently ranks 13th in the NCAA in stolen bases per game (1.93) and leads the Sun Belt Conference with 89 in 111 attempts, making ULM one of the fastest teams in the nation. ULM's 89 stolen bases also ranks fifth all-time for the most stolen bases in a season in program history, with the most being 161 bases on 184 attempts during the 1998 season.

Individually, Brianna Love ranks first in the Sun Belt in stolen bases with 25 in 28 attempts and 28th in the nation (0.58). Jessica Olguin is second for ULM with 17 in 21 attempts.

### A SEASON OF FIRSTS

This has been a season of firsts for ULM, including claiming the program's first-ever series wins over formidable opponents Troy and FIU and its first-ever series sweep of Middle Tennessee. This also marks the first season ULM claimed the Preseason Player of the Year in back-to-back seasons.

### WALK IT OUT

Brianna Love is such a powerful batter that she has already collected 41 walks this season, matching her career-high 41 walks from last season. She also has a career-high eight intentional walks this season and totals 16 for her career. Love ranks 11th in the nation in walks per game (0.88) and second in the Sun Belt.

### 20-WIN PLATEAU

The Warhawks have already hit the 20-win threshold this season, picking up their 20th win with a 7-6 win over Florida Atlantic Apr. 2. This marks the second-straight season ULM has amassed 20 victories, including the fourth of five seasons in the Sun Belt.

### FRITZ MAKES HER MARK IN THE RECORD BOOKS

Heather Fritz moved into a tie for third all-time on the career save leaders list at ULM after holding off Florida Atlantic for ULM's lone win against the Owls this season. Fritz pitched the final inning of the nightcap of the doubleheader and notched one hit, one walk and one strikeout to seal the 7-6 Sun Belt Conference win and earn her fifth career save.

Fritz also ranks ninth all-time at ULM in strikeouts with 129 over four seasons including 20 this season.

### SUN BELT PLAYER OF THE WEEK TWO-STRAIGHT WEEKS

Brianna Love picked up her second-consecutive Sun Belt Player of the Week honor after her outstanding performance at Florida Atlantic. In nine games she has amassed an eye-boggling 17 runs, 13 RBIs, 38 total bases, six home runs, seven stolen bases, three doubles, one triple and 10 walks, four intentional with a combined 15-for-24 performance for a .625 batting average.

### LOVE'S RECORD BREAKING SEASON

Brianna Love currently ranks in the top-10 of every career category tracked at ULM, including entering 2010 ranked first in career batting average (.357), first in slugging percentage (.693), first in on

## 2011 Quick Facts

### UNIVERSITY

Location	Monroe, La.
Founded	1931
Enrollment	9,004
Nickname	Warhawks
Colors	Maroon and Gold
Mascot	Ace
Conference	Sun Belt
President	Dr. Nick J. Bruno
AD	Bobby Staub
SWA	Tasha Tisher
Athletics Phone	(318) 342-3ULM
Web Site	ulmwarhawks.com

### COACHING STAFF

Head Coach	Rosemary Holloway-Hill
Alma Mater	Oral Roberts, '77
Record at ULM (Seasons)	679-862-3 (26)
Assistant Coach	Sara Vogt
Alma Mater	Indiana, '03
Years at ULM	Third Season
Graduate Assistant	Paige Cassidy
Alma Mater	FIU, '10
Years at ULM	First Season

### TEAM INFORMATION

2010 Record	24-26
2010 Sun Belt Finish	9-14 (7th)
2010 Sun Belt Tournament Finish	Quarterfinals
2010 Postseason	didn't qualify
Letterwinners Returning/Lost	13/4
Starters Returning/Lost	7/2
Pitchers Returning/Lost	3/1
Newcomers	5

### FACILITY INFORMATION

Venue	ULM Softball Complex
Capacity	500
Dimensions (L-R)	200-210-220-210-200
Press Box Number	

### PROGRAM HISTORY

All-Time Record (Percentage)	756-950-3 (.443)
NCAA Tournament Appearances	1
Years	1997
NCAA Tournament Record	1-2

### SUN BELT HISTORY

All-Time SBC Record (Percentage)	31-58 (.361)
Sun Belt Tournament Appearances	3

## By The Numbers

ULM	ARKANSAS
25-22.....Record .....	12-35
.280.....Batting Avg. ....	.236
5.19.....Runs/Game .....	2.85
7.34.....Hits/Game .....	6.04
58.....Doubles .....	41
8.....Triples.....	10
29.....Home Runs.....	18
208.....RBI.....	117
89-111.....Stolen Bases.....	45-58
3.44.....ERA .....	4.69
0.57.....K/IP .....	0.74
1.77.....K/BB .....	1.63
0.32.....BB/IP .....	0.46
.953.....Fielding % .....	.947

## 2011 Sun Belt Conference Standings (as of 4/25/11)

Team	Conference			Overall		
	W	L	Pct.	W	L	Pct.
UL-Lafayette	13	5	.722	28	9	.757
Florida Atlantic	15	7	.682	31	22	.585
South Alabama	11	8	.579	32	13	.711
FIU	11	8	.579	27	23	.540
<b>ULM</b>	<b>10</b>	<b>11</b>	<b>.476</b>	<b>25</b>	<b>22</b>	<b>.532</b>
Troy	9	10	.474	28	23	.549
Western Kentucky	7	11	.389	26	22	.542
Middle Tennessee	7	14	.333	16	28	.364
North Texas	6	15	.286	20	28	.417

base percentage (.470) and first in base on balls (121).

In 2011 she has continued to snap records, including tying for first all-time in triples (14) while ranking fourth in doubles (36) and fourth in RBIs (115).

### LOVE PICKED PRESEASON PLAYER OF THE YEAR

For the second consecutive season, senior outfielder Brianna Love was selected as the Preseason Player of the Year by the nine head coaches of the Sun Belt Conference. Love earned her first Preseason Player of the Year in 2010.

### RANKED OPPONENTS IN 2011

ULM has faced three ranked opponents this season in No. 7 Tennessee, No. 10 Oklahoma and No. 23 Baylor. The Warhawks fell a combined 24-7 in those three games. The Warhawks will face one more ranked opponent this season in SBC and in-state rival No. 18 UL-Lafayette.

### ULM PICKED SEVENTH IN SBC

ULM softball was picked to finish seventh in the Sun Belt Conference this season after receiving 25 votes in the preseason poll. The Warhawks finished the 2010 season seventh overall. UL-Lafayette earned 80 votes and all but one first place vote to rank first.

### 2010 RECAP

The Warhawks finished 2010 with its winnigest season since 2007, going 24-26 overall and 9-14 in SBC play. ULM's 24 wins are the most since it went 24-38 overall in 2007. It also marked the third 20-win season for the Warhawks since joining the Sun Belt in 2007.

### 2010 OFFENSIVE LEADER

Love ranked first in virtually every offensive category for ULM in 2010, including batting average (.394), runs scored (41), hits (54), homeruns (11) and stolen bases (15).

### ULM SIGNS THREE FOR 2012

The Warhawks landed three outstanding recruits as Alexis Cacioppo, Kayla Boening and Mackenzie Miller each signed National Letters of Intent for the 2012 season.

**Alexis Cacioppo**, a native of La Habra, Calif., is a multi-faceted player who will bring in experience at second base, shortstop and outfielder. Cacioppo has earned many accolades over the past three seasons including first-team All-League for three years straight, Rookie of the Year honors her

freshman season and was named to the All-Tournament Team at the Diamond Barr HS softball tournament this past season.

**Kayla Boening**, a native of San Antonio, Texas, earned a spot on the first team all-state her sophomore and junior campaigns as a shortstop and was the District Defensive Most Valuable Player in 2009 and 2010 as a member of the Poth High School team. She also led the San Antonio area across all players in the 1A-5A classifications with a .593 batting average.

**Mackenzie Miller**, a native of Evergreen, Colo., has earned a slew of accolades over her three seasons with Conifer High School as a shortstop and utility player. A first team all-conference selection every season, she has three-consecutive Most Valuable Player honors from her high school team. She also earned an all-state honorable mention during the 2008-2009 season.

## 2011 Sun Belt Rankings

(as of 4/21/11)

OFFENSIVE	RANK
Batting Average (.284)	3rd
Hits (327)	7th
Runs (231)	3rd
RBIs (199)	4th
Doubles (56)	4th
Triples (8)	8th
Home Runs (26)	7th
Walks (145)	2nd
<b>Stolen Bases (86)</b>	<b>1st</b>

PITCHING/DEFENSEIVE	RANK
ERA (3.24)	6th
Hits (332)	7th
Runs (183)	5th
Earned Runs (132)	6th
Strikeouts (166)	9th
Walks (95)	3rd
Fielding Percentage (.953)	7th
Errors (62)	4th

INDIVIDUALS	RANK
Brianna Love -- batting average (.371)	8th
Brianna Love -- runs scored (52)	3rd
Brianna Love -- home runs (12)	4th
Brianna Love -- total bases (102)	5th
<b>Brianna Love -- stolen bases (25-28)</b>	<b>1st</b>
Brianna Love -- doubles (12)	5th
Brianna Love -- triples (4)	14th
Jessica Olquin -- batting average (.365)	10th
Jessica Olquin -- hits (54)	5th
Roxy Cassel -- RBIs (41)	5th
Heather Fritz -- earned run average (2.10)	4th

## 2011 NCAA Rankings

(as of 4/21/11)

OFFENSIVE	RANK
<b>Stolen Bases Per Game (1.93)</b>	<b>13th</b>
Scoring (5.19)	58th
Triples Per Game (0.19)	80th
Batting Average (.283)	94th
Doubles Per Game (1.21)	95th

INDIVIDUALS (TOP-100 ONLY)	RANK
Roxy Cassel -- RBIs per game (0.95)	66th
<b>Katie Girardi -- walks (0.74)</b>	<b>25th</b>
<b>Brianna Love -- walks (0.88)</b>	<b>11th</b>
<b>Brianna Love -- runs per game (1.16)</b>	<b>11th</b>
Brianna Love -- stolen bases (0.58)	28th
Brianna Love -- triples (4.0)	28th
Brianna Love -- home runs (12.0)	35th
Brianna Love -- slugging percentage (0.803)	37th
Brianna Love -- triples per game (0.09)	46th
Brianna Love -- one base percentage (0.509)	56th
Brianna Love -- home runs per game (0.28)	60th
<b>Janel Salanoa -- toughest to strikeout (42.7)</b>	<b>5th</b>
<b>Janel Salanoa -- sacrifice flies (4.0)</b>	<b>10th</b>

# 2011 ULM Softball Team



## BY CLASS

Seniors..... Sarah Carriger  
 ..... Heather Fritz  
 ..... Brianna Love  
 ..... Jessica Olguin  
 ..... Melissa Rivera  
 Juniors ..... Roxy Cassel  
 ..... Jessica Chastka  
 ..... Katie Girardi  
 ..... Tiffany Mills  
 Sophomores..... Elena Di Mattia  
 ..... Charlotte Pastor  
 ..... Janel Salanoa  
 ..... Elise West  
 ..... Lacey Willis  
 Freshmen..... Regina Ayala  
 ..... Miyuki Navarrete  
 ..... Samantha Riojas  
 ..... Stephanie Routzon

## BY POSITION

C..... Roxy Cassel  
 ..... Katie Girardi  
 IF..... Sarah Carriger  
 ..... Jessica Olguin  
 ..... Charlotte Pastor  
 ..... Samantha Riojas  
 ..... Stephanie Routzon  
 ..... Janel Salanoa  
 ..... Elise West  
 OF..... Sarah Carriger  
 ..... Elena Di Mattia  
 ..... Brianna Love  
 ..... Miyuki Navarrete  
 ..... Melissa Rivera  
 P..... Jessica Chastka  
 ..... Heather Fritz  
 ..... Tiffany Mills  
 ..... Stephanie Routzon  
 UT..... Regina Ayala  
 ..... Lacey Willis  
 DP..... Roxane Cassel

## BY STATE

Arizona ..... Samantha Riojas  
 California ..... Regina Ayala  
 ..... Tiffany Mills  
 ..... Miyuki Navarrete  
 ..... Jessica Olguin  
 ..... Melissa Rivera  
 ..... Janel Salanoa  
 Colorado ..... Stephanie Routzon  
 Florida..... Katie Girardi  
 Kansas..... Heather Fritz  
 Louisiana..... Elena Di Mattia  
 ..... Charlotte Pastor  
 ..... Elise West  
 ..... Lacey Willis  
 Oklahoma..... Sarah Carriger  
 Texas..... Roxy Cassel  
 ..... Jessica Chastka  
 ..... Brianna Love

No.	Player	Pos.	B/T	Ht.	Yr.	Hometown(Previous School)
2	Lacey Willis	UT	L/R	5-2	So.	Winnfield, La. (Bossier Parish CC)
3	Elena Di Mattia	OF	L/R	5-4	So.	Sunset, La. (Beau Chene HS)
4	Brianna Love	OF	R/R	5-8	Sr.	Garland, Texas (Garland HS)
7	Miyuki Navarrete	OF	R/R	5-6	Fr.	San Jose, Calif. (Archbishop Mitty HS)
9	Jessica Olguin	IF	S/R	5-5	Sr.	Yorba Linda, Calif. (Esperanza HS)
10	Charlotte Pastor	IF	L/R	5-3	So.	Metairie, La. (St. Mary's Dominican HS)
12	Stephanie Routzon	P/IF	R/R	6-0	Fr.	Wheat Ridge, Colo. (Wheat Ridge HS)
13	Roxy Cassel	C/DP	R/R	5-8	Jr.	Deer Park, Texas (Deer Park HS)
14	Sarah Carriger	IF/OF	L/R	5-5	Sr.	Claremore, Okla. (Oklahoma State)
15	Jessica Chastka	P	R/R	5-8	Jr.	College Station, Texas (A&M Consolidated HS)
16	Janel Salanoa	IF	R/R	5-5	So.	San Jose, Calif. (Evergreen Valley HS)
17	Samantha Riojas	IF	R/R	5-6	Fr.	Phoenix, Ariz. (Centennial HS)
18	Elise West	IF	L/L	5-8	So.	Lafayette, La. (Lafayette HS)
19	Regina Ayala	UT	L/R	5-3	Fr.	Norwalk, Calif. (Santa Fe HS)
20	Melissa Rivera	OF	R/R	5-3	Sr.	Moreno Valley, Calif. (Canyon Springs HS)
22	Tiffany Mills	P	R/R	5-11	RSo.	Riverside, Calif. (Martin Luther King HS)
23	Heather Fritz	P	L/L	5-10	Sr.	Salina, Kan. (Salina HS South)
24	Katie Girardi	IF/C	R/R	5-8	Jr.	Pembroke Pines, Fla. (McArthur HS)

## COACHING STAFF

Head Coach: Rosemary Holloway-Hill, 27th Season (Oral Roberts, '77)  
 Assistant Coach: Sara Vogt, Third Season (Indiana, '03)  
 Graduate Assistant Coach: Paige Cassidy, First Season (FIU, '10)

## PRONUNCIATIONS

Regina Ayala ..... a-yall-a	Jessica Olguin ..... ol-geen
Jessica Chastka ..... chas-t-ka	Samantha Riojas ..... re-o-hoss
Elena DiMattia ..... de-matt-e-ah	Stephanie Routzon ..... rout-zun
Brianna Love ..... bre-on-ah	Janel Salanoa ..... sal-a-noah
Miyuki Navarrete ..... me-you-key na-va-rhet	Sara Vogt..... vote

## ULM's Record When...

<b>OVERALL</b>	<b>25-22</b>
<b>NON-CONFERENCE</b>	<b>15-11</b>
<b>LOUISIANA TEAMS</b>	<b>4-1</b>
<b>SUN BELT</b>	<b>10-11</b>
<b>VS. TOP 25</b>	<b>0-3</b>
<b>DAY GAMES</b> <b>18-16</b>	
<b>NIGHT GAMES</b> <b>7-6</b>	
<b>HOME</b> <b>14-5</b>	
<b>AWAY</b> <b>6-12</b>	
<b>NEUTRAL</b> <b>5-5</b>	
<b>FEBRUARY</b> <b>8-8</b>	
<b>MARCH</b> <b>11-7</b>	
<b>APRIL</b> <b>6-8</b>	
<b>MAY</b> <b>-</b>	
<b>SUNDAY</b> <b>7-4</b>	
<b>MONDAY</b> <b>N/A</b>	
<b>TUESDAY</b> <b>3-0</b>	
<b>WEDNESDAY</b> <b>2-1</b>	
<b>THURSDAY</b> <b>0-1</b>	
<b>FRIDAY</b> <b>4-5</b>	
<b>SATURDAY</b> <b>9-11</b>	
<b>SHUTOUTS</b> <b>6-4</b>	
<b>RUN-RULE GAMES</b> <b>10-3</b>	
<b>EXTRA-INNING GAMES</b> <b>3-2</b>	
<b>ONE-RUN GAMES</b> <b>9-6</b>	
<b>TWO-RUN GAMES</b> <b>1-5</b>	
<b>FIVE-RUN + GAMES</b> <b>13-4</b>	
<b>SCORED FIRST</b> <b>18-4</b>	
<b>OPPONENT SCORED FIRST</b> <b>7-18</b>	
<b>SCORED IN 1st INNING</b> <b>14-7</b>	
<b>OPPONENT SCORED IN 1st INNING</b> <b>8-11</b>	
<b>SCORED 0-2 RUNS</b> <b>2-14</b>	
<b>SCORED 3-5 RUNS</b> <b>4-6</b>	
<b>SCORED 6-9 RUNS</b> <b>12-2</b>	
<b>SCORED 10 + RUNS</b> <b>7-0</b>	
<b>OPPONENT SCORED 0-2 RUNS</b> <b>11-4</b>	
<b>OPPONENT SCORED 3-5 RUNS</b> <b>9-7</b>	
<b>OPPONENT SCORED 6-9 RUNS</b> <b>4-8</b>	
<b>OPPONENT SCORED 10 + RUNS</b> <b>1-3</b>	
<b>OUT-HIT OPPONENT</b> <b>17-0</b>	
<b>OUT-HIT BY OPPONENT</b> <b>5-18</b>	
<b>HITS ARE TIED</b> <b>3-4</b>	
<b>MADE 0 ERRORS</b> <b>11-5</b>	
<b>MADE 1 ERRORS</b> <b>7-4</b>	
<b>MADE 2+ ERRORS</b> <b>7-13</b>	
<b>OPPONENT MADE 0 ERRORS</b> <b>2-7</b>	
<b>OPPONENT MADE 1 + ERRORS</b> <b>6-8</b>	
<b>OPPONENT MADE 2+ ERRORS</b> <b>17-7</b>	
<b>HIT 0 HOME RUNS</b> <b>12-14</b>	
<b>HIT 1 HOME RUN</b> <b>7-7</b>	
<b>HIT 2+ HOME RUNS</b> <b>6-1</b>	
<b>AFTER 4 LEADING</b> <b>15-3</b>	
<b>AFTER 4 TRAILING</b> <b>5-15</b>	
<b>AFTER 4 TIED</b> <b>5-4</b>	
<b>AFTER 5 LEADING</b> <b>9-1</b>	
<b>AFTER 5 TRAILING</b> <b>2-17</b>	
<b>AFTER 5 TIED</b> <b>7-2</b>	
<b>AFTER 6 LEADING</b> <b>11-1</b>	
<b>AFTER 6 TRAILING</b> <b>2-19</b>	
<b>AFTER 6 TIED</b> <b>4-0</b>	

## Head Coach Rosemary Holloway-Hill

With 26 years in the dugout for the ULM softball team, Rosemary Holloway-Hill enters the 2011 season as the longest tenured of all the current Warhawks head coaches. The dean of the ULM coaching family, Holloway-Hill enters her 27th season as softball skipper with more victories than any head coach in any sport in Warhawks history.

Entering the 2011 season, Holloway-Hill has led the Warhawks to 654 wins, three conference championships and two postseason appearances. Her 654 victories rank 31st among all NCAA active coaches. In the fall of 2009 she was honored at the National Fastpitch Coaches Association after reaching her 700th career coaching victory. Holloway-Hill also coached ULM's only All-American Sarah Dawson.

Holloway-Hill took the Warhawks to the Sun Belt Tournament for the third time in program history last season and made a run at the championship after pulling out an upset over No. 2 seed FIU in the first round. ULM claimed another win over No. 8 Middle Tennessee before eventually falling to the 2011 Sun Belt champions UL-Lafayette.

The longtime mentor of the ULM softball program, Holloway-Hill has constantly challenged her teams by playing some of the top talent in the nation. The 2007 season



brought new challenges as the Warhawks played their first season in the highly competitive Sun Belt Conference. Despite finishing ninth in the league in its inaugural campaign, ULM once again finished with a winning record at home and tallied victories over the league's top three teams.

In addition to producing talented and winning teams on the diamond, Holloway-Hill has stressed that her student athletes enjoy a balanced collegiate experience. Community service and academics have been fundamental values within the Warhawks softball program thanks to the emphasis Holloway-Hill has placed on them. Since becoming head coach, 15 players have been named National Fastpitch Coaches Association All-America Scholar Athletes.

ULM's 2005 squad and Holloway-Hill were recognized by the NFCA for having one of the top academic records in the nation. On a list of the top cumulative grade point averages for the 2003-04 academic season, Holloway-Hill's squad ranked 77th overall with a 2.816 GPA, the highest in the Southland Conference and the second highest in the state of Louisiana.

As good as ULM has been in the classroom under Holloway-Hill, they have been even better on the field. In addition to having the most wins in ULM history, her 238 victories from the program's days in the Southland Conference were the most by any school in that league. Holloway-Hill posted her 200th-career win against the SLC came in a 5-2 decision over McNeese State on April 21, 2001.

Following the 2004 season, the NFCA recognized ULM's achievements on the softball field when its All-Time Top 50 poll was released. ULM was ranked No. 43 amongst the more than 250 Division I softball programs in the nation, the highest in the Southland Conference and the third highest amongst all the schools in the state of Louisiana. The top 50 ranking was compiled using weekly USA Today/NFCA polls from 1995 through 2003.

Holloway-Hill came to what was then Northeast Louisiana University in 1984 as an assistant coach to Mary Jo Murray before becoming the program's fifth head coach the following season. She promptly guided the Warhawks to the Southland Conference Tournament championship - the university's first - in her first season as head coach in 1985. Her 1986 squad also claimed the tournament title.

In 1992, ULM finished in second in the conference race but the team's record against a strong schedule - a trademark of a Holloway-Hill team - earned it the chance to compete in the National Invitational Championships in Macomb, Ill., a tournament for leading teams which did not make the NCAA playoffs. ULM won the tournament with a 6-1 record, defeating Ivy League champion Princeton in the finals, 3-0.

Holloway-Hill's greatest team came five years later. The 1997 edition, led by All-American pitcher Sarah Dawson, won the Southland Conference championship, posted a 47-12 record, was ranked No. 18 in the nation, and competed in the NCAA tournament before being defeated by eventual national runner-up UCLA.

Following the 1997 season, Holloway-Hill garnered numerous coaching honors. She was named Southland Conference Coach of the Year by her peers in the coaching ranks, Louisiana Coach of the Year by the Louisiana Sports Writers Association, and South Region Coach of the Year by the NFCA.

## HOME RUNS THIS SEASON

No.	Date	Opp.	Batter	Inning	ROB	Count	Note
29.	04/23	Western Kentucky	Love (14)	7th	0	2-0	
28.	04/23	Western Kentucky	Cassel (5)	6th	0	0-0	
27.	04/22	Western Kentucky	Love (13)	7th	0	1-0	
26.	04/16	North Texas	Love (12)	3rd	0	2-0	
25.	04/3	Florida Atlantic	Love (11)	3rd	1	0-0	
24.	04/2	Florida Atlantic	Love (10)	6th	1	2-0	
23.	04/2	Florida Atlantic	Salanoa (7)	3rd	0	0-0	
22.	03/31	Nicholls State	Love (9)	6th	0	1-1	
21.	03/27	Middle Tennessee	Cassel (4)	7th	3	1-0	WO GS
20.	03/27	Middle Tennessee	Love (8)	5th	3	1-0	GS
19.	03/26	Middle Tennessee	Salanoa (6)	6th	1	1-0	
18.	03/26	Middle Tennessee	Love (7)	6th	0	1-1	
17.	03/26	Middle Tennessee	Salanoa (5)	3rd	1	2-2	
16.	03/26	Middle Tennessee	Cassel (3)	3rd	0	2-1	
15.	03/23	Stephen F. Austin	Love (6)	2nd	1	2-0	
14.	03/13	South Alabama	Love (5)	5th	1	1-0	WO
13.	03/13	South Alabama	Cassel (2)	1st	2	1-2	
12.	03/5	Georgia Southern	Salanoa (4)	1st	1	2-0	
11.	03/4	No. 7 Tennessee	Love (4)	1st	0	2-2	LO
10.	03/4	Furman	Salanoa (3)	3rd	0	1-1	
9.	03/4	Furman	Cassel (1)	3rd	1	3-1	
8.	03/4	Furman	Love (3)	3rd	0	2-0	
7.	02/27	Sam Houston State	Love (2)	2nd	1	2-1	
6.	02/20	Sam Houston State	Salanoa (2)	2nd	0	---	LO
5.	02/19	No. 6 Oklahoma	Love (1)	4th	0	---	
4.	02/19	No. 6 Oklahoma	Navarrete (1)	4th	1	---	
3.	02/18	Sam Houston State	Riojas (1)	5th	0	---	
2.	02/11	Northwestern State	Girardi (1)	4th	0	2-2	LO
1.	02/11	SE Missouri State	Salanoa (1)	2nd	2	2-2	

# 2011 Results

DATE	OPPONENT	RESULT	ULM R/H/E	OPP R/H/E	RECORD	SUN BELT	PITCHER OF RECORD	ATT	TIME
Feb. 11	(1) SE Missouri State	W, 11-3 (5)	11-9-0	3-4-6	1-0	0-0	Mills (W, 1-0)	220	1:42
Feb. 11	(1) Northwestern State	W, 8-0 (5)	8-5-1	0-4-3	2-0	0-0	Routzon (W, 1-0)	220	2:00
Feb. 12	(1) SE Missouri State	W, 6-1	6-10-1	1-7-0	3-0	0-0	Chastka (W, 1-0)	234	1:58
Feb. 12	(1) Eastern Illinois	W, 2-1	2-3-3	1-4-3	4-0	0-0	Mills (W, 2-0)	145	1:30
Feb. 13	(1) Eastern Illinois	L, 0-1	0-4-0	1-8-0	4-1	0-0	Routzon (L, 1-1)	176	1:47
Feb. 13	(1) Indiana State	W, 9-0 (6)	9-9-0	0-7-2	5-1	0-0	Mills (W, 3-0)	211	1:46
Feb. 18	(2) vs. Sam Houston State	W, 11-8	11-13-1	8-14-1	6-1	0-0	Routzon (W, 2-1)	462	2:00
Feb. 18	(2) at New Mexico State	L, 3-6	3-8-2	6-9-0	6-2	0-0	Mills (L, 3-1)	462	1:55
Feb. 19	(2) vs. No. 6 Oklahoma	L, 4-14 (5)	4-7-2	14-15-1	6-3	0-0	Mills (L, 3-2)	340	1:46
Feb. 19	(2) vs. Southern Utah	L, 7-10 (8)	7-7-5	10-14-4	6-4	0-0	Fritz (L, 0-1)	340	2:31
Feb. 20	(2) vs. Sam Houston State	W, 5-4 (8)	5-6-1	4-12-2	7-4	0-0	Routzon (W, 3-1)	0	1:55
Feb. 25	(3) vs. Central Arkansas	L, 1-4	1-3-3	4-5-1	7-5	0-0	Chastka (L, 1-1)	0	1:40
Feb. 26	(3) vs. No. 23 Houston	L, 0-8 (5)	0-0-2	8-12-1	7-6	0-0	Routzon (L, 3-2)	0	1:34
Feb. 26	(3) at Baylor	L, 1-2	1-4-4	2-7-0	7-7	0-0	Mills (L, 3-3)	1103	1:37
Feb. 27	(3) vs. Sam Houston State	W, 5-4 (8)	5-14-0	4-10-0	8-7	0-0	Fritz (1-1)	0	2:23
Feb. 27	(3) vs. No. 23 Houston	L, 0-1	0-5-0	1-5-1	8-8	0-0	Mills (L, 3-4)	0	1:55
Mar. 3	at Alcorn State	W, 5-4	5-7-0	4-5-5	9-8	0-0	Mills (W, 4-4)	115	1:50
Mar. 4	(4) vs. Furman	W, 12-3 (5)	12-14-0	3-5-2	10-8	0-0	Routzon (W, 4-2)	0	1:28
Mar. 4	(4) at No. Tennessee	L, 1-3	1-2-0	3-9-0	10-9	0-0	Mills (L, 4-5)	623	1:38
Mar. 5	(4) vs. Georgia Southern	W, 10-5	10-10-0	5-8-1	11-9	0-0	Mills (W, 5-5)	0	1:58
Mar. 9	at Stephen F. Austin	L, 3-10	3-9-4	10-9-2	11-10	0-0	Mills (L, 5-6)	114	2:02
Mar. 12	* South Alabama	L, 1-3	1-4-0	3-4-1	11-11	0-1	Mills (L, 5-7)	50	2:08
Mar. 12	* South Alabama	L, 2-5	2-6-4	5-10-1	11-12	0-2	Routzon (L, 4-3)	76	2:10
Mar. 13	* South Alabama	W, 11-3 (5)	11-12-2	3-5-3	12-12	1-2	Mills (W, 6-7)	36	1:51
Mar. 19	* at Troy	L, 0-3	0-3-2	3-7-0	12-13	1-3	Mills (L, 6-8)	-	1:39
Mar. 19	* at Troy	W, 6-5	6-10-0	5-12-1	13-13	2-3	Chastka (W, 2-1)	450	2:12
Mar. 20	* at Troy	W, 7-1	7-7-1	1-4-4	14-13	3-3	Mills (W, 7-8)	211	1:51
Mar. 22	Centenary	W, 8-0 (5)	8-9-2	0-0-2	15-13	3-3	Routzon (W, 5-3)	56	1:16
Mar. 23	Stephen F. Austin	W, 11-2 (5)	11-12-0	2-5-1	16-13	3-3	Mills (W, 8-8)	43	1:38
Mar. 26	* Middle Tennessee	W, 9-8	9-15-4	8-8-2	17-13	4-3	Chastka (W, 3-1)	-	2:28
Mar. 26	* Middle Tennessee	W, 5-3	5-8-1	3-8-1	18-13	5-3	Mills (W, 9-8)	76	1:48
Mar. 27	* Middle Tennessee	W, 15-12	15-15-2	12-18-1	19-13	6-3	Mills (W, 10-8)	80	2:44
Mar. 31	Nicholls State	L, 5-7 (8)	5-9-1	7-9-2	19-14	6-3	Routzon (L, 5-4)	105	2:27
Apr. 2	* Florida Atlantic	L, 1-3	1-4-1	3-6-2	19-15	6-4	Mills (L, 10-9)	130	1:30
Apr. 2	* Florida Atlantic	W, 7-6	7-11-0	6-8-2	20-15	7-4	Routzon (W, 6-4)	173	2:10
Apr. 3	* Florida Atlantic	L, 6-4	4-6-2	6-7-1	20-16	7-5	Mills (L, 10-10)	183	1:45
Apr. 9	* FIU	L, 2-5	2-4-3	5-9-0	20-17	7-6	Mills (L, 10-11)	63	2:05
Apr. 9	* FIU	W, 8-7	8-9-2	7-9-3	21-17	8-6	Chastka (W, 4-1)	85	2:14
Apr. 10	* FIU	W, 1-0	1-4-1	0-2-1	22-17	9-6	Routzon (W, 7-4)	203	1:34
Apr. 15	Grambling State	W, 7-0	7-9-0	0-2-5	23-17	9-6	Mills (W, 11-11)	150	1:50
Apr. 16	* North Texas	W, 7-2 (10)	7-7-3	2-7-3	24-17	10-6	Mills (W, 12-11)	275	2:40
Apr. 16	* North Texas	L, 1-8	1-2-2	8-10-0	24-18	10-7	Routzon (L, 7-5)	275	1:35
Apr. 17	* North Texas	L, 1-2	1-5-0	2-7-1	24-19	10-8	Mills (L, 12-12)	200	1:40
Apr. 19	Grambling State	W, 8-0 (5)	8-7-0	0-0-4	25-19	10-8	Routzon (W, 8-5)	48	1:18
Apr. 22	* Western Kentucky	L, 5-6	5-6-2	6-10-3	25-20	10-9	Mills (L, 12-13)	122	1:57
Apr. 22	* Western Kentucky	L, 2-6	2-6-1	6-8-2	25-21	10-10	Routzon (L, 8-6)	122	1:50
Apr. 23	* Western Kentucky	L, 6-7	6-6-1	7-13-2	25-22	10-11	Fritz (1-2)	120	1:59

## home games in bold

(1) ULM Mardi Gras Classic (Monroe, La.)

(2) Troy Cox Classic (Las Cruces, N.M.)

(3) QTI Powers Invitational (Waco, Texas)

(4) Tennessee Classic (Knoxville, Tenn.)

\* Sun Belt Conference games

**2011 ULM Warhawk Softball  
Overall Statistics for ULM (as of Apr 25, 2011)  
(All games Sorted by Batting avg)**

Record: 25-22 Home: 14-5 Away: 6-12 Neutral: 5-5 Sun Belt: 10-11

Player	avg	gp-gs	ab	r	h	2b	3b	hr	rbi	tb	slg%	bb	hp	so	gdp	ob%	sf	sh	sb-att	po	a	e	fld%	
Love, Brianna	.371	47-47	132	55	49	12	4	14	36	111	.841	41	1	18	0	.514	3	0	26-30	62	12	2	.974	
Olguin, Jessica	.367	47-47	158	34	58	6	1	0	18	66	.418	10	1	18	0	.408	0	5	17-21	30	2	1	.970	
Salanoa, Janel	.343	46-45	140	31	48	10	1	7	35	81	.579	13	3	3	0	.400	4	2	9-12	70	88	19	.893	
Cassel, Roxane	.288	47-47	139	23	40	6	0	5	42	61	.439	25	2	24	0	.404	0	3	4-4	194	29	7	.970	
Rivera, Melissa	.264	47-47	148	12	39	10	0	0	23	49	.331	4	1	16	2	.288	0	7	2-2	38	0	0	1.000	
West, Elise	.247	36-36	97	9	24	2	0	0	6	26	.268	6	7	30	0	.336	0	1	5-5	244	17	5	.981	
Navarrete, Miyuki	.236	47-47	123	30	29	1	0	1	12	33	.268	11	3	19	1	.314	0	6	14-19	125	103	9	.962	
Girardi, Katie	.215	45-44	107	9	23	5	1	1	19	33	.308	32	4	33	0	.407	2	3	2-4	111	45	7	.957	
-----																								
Riojas, Samantha	.205	32-28	78	11	16	3	1	1	6	24	.308	3	1	19	1	.244	0	1	1-2	15	34	7	.875	
Ayala, Regina	.200	33-28	75	6	15	3	0	0	11	18	.240	5	1	11	0	.259	0	2	0-0	7	11	3	.857	
Dimattia, Elena	.167	39-1	6	15	1	0	0	0	0	1	.167	0	0	3	0	.167	0	0	5-6	0	0	0	.000	
Pastor, Charlotte	.107	22-6	28	5	3	0	0	0	0	3	.107	3	2	13	1	.242	0	0	1-2	1	0	0	1.000	
Willis, Lacey	.000	12-0	1	4	0	0	0	0	0	0	.000	0	0	1	0	.000	0	0	3-4	0	0	0	.000	
Totals	.280	47	1232	244	345	58	8	29	208	506	.411	153	26	208	5	.369	9	30	89-111	909	429	66	.953	
Opponents	.293	47	1237	202	363	58	7	23	176	504	.407	98	24	173	3	.355	6	37	41-54	917	435	84	.942	

LOB - Team (294), Opp (296). DPs turned - Team (15), Opp (14). CI - Team (1), Cassel 1, Opp (1). IBB - Team (8), Love 8.  
Picked off - Olguin 2.

**(All games Sorted by Earned run avg)**

Player	era	w-l	app	gs	cg	sho	sv	ip	h	r	er	bb	so	2b	3b	hr	b/avg	wp	hp	bk	sfa	sha
Mills, Tiffany	3.20	12-13	29	26	15	2/0	0	144.1	165	91	66	54	88	24	3	6	.286	6	11	1	0	22
Chastka, Jessica	3.44	4-1	13	3	1	0/0	0	38.2	53	29	19	9	15	3	0	6	.329	4	3	0	4	4
Routzon, Stephanie	4.05	8-6	25	18	5	4/0	0	93.1	117	61	54	30	50	28	2	10	.305	3	6	0	1	10
-----																						
Fritz, Heather	2.62	1-2	12	0	0	0/0	1	26.2	28	21	10	5	20	3	2	1	.243	3	4	2	1	1
Totals	3.44	25-22	47	47	21	6/0	1	303.0	363	202	149	98	173	58	7	23	.293	16	24	3	6	37
Opponents	3.89	22-25	47	47	23	4/0	2	305.2	345	244	170	153	208	58	8	29	.280	26	26	2	9	30

PB - Team (6), Cassel 6, Opp (13). Pickoffs - Team (1), Cassel 1, Opp (1). SBA/ATT - Cassel (41-53), Mills (22-30), Routzon



**2011 ULM Warhawk Softball**  
**Conference statistics for ULM (as of Apr 25, 2011)**  
**(Sun Belt games only Sorted by Batting avg)**

Record: 10-11 Home: 6-3 Away: 4-8 Sun Belt: 10-11

Player	avg	gp-gs	ab	r	h	2b	3b	hr	rbi	tb	slg%	bb	hp	so	gdp	ob%	sf	sh	sb-att	po	a	e	fld%	
Olguin, Jessica	.458	21-21	72	18	33	2	1	0	8	37	.514	7	1	5	0	.513	0	1	10-12	15	1	1	.941	
Salanoa, Janel	.323	20-19	65	12	21	6	0	3	14	36	.554	3	2	2	0	.361	2	0	5-7	26	44	9	.886	
Love, Brianna	.305	21-21	59	21	18	0	2	8	17	46	.780	22	0	8	0	.488	1	0	11-14	31	6	2	.949	
Cassel, Roxane	.262	21-21	65	10	17	2	0	4	20	31	.477	10	1	14	0	.368	0	2	1-1	75	9	6	.933	
West, Elise	.241	21-21	58	4	14	0	0	0	0	14	.241	4	4	18	0	.333	0	0	1-1	152	9	3	.982	
Rivera, Melissa	.227	21-21	66	6	15	0	0	0	8	15	.227	2	1	9	1	.261	0	4	1-1	23	0	0	1.000	
Girardi, Katie	.200	20-19	55	1	11	4	0	0	12	15	.273	11	2	19	0	.348	1	2	1-2	21	34	4	.932	
Ayala, Regina	.179	15-14	39	0	7	0	0	0	4	7	.179	2	0	6	0	.220	0	1	0-0	5	3	1	.889	
Navarrete, Miyuki	.143	21-21	56	12	8	0	0	0	2	8	.143	8	1	9	1	.262	0	3	3-4	64	49	4	.966	
-----																								
Riojas, Samantha	.200	9-8	20	2	4	2	0	0	2	6	.300	1	0	4	0	.238	0	0	0-1	3	7	2	.833	
Pastor, Charlotte	.182	11-2	11	5	2	0	0	0	0	2	.182	0	1	7	0	.250	0	0	1-1	1	0	0	1.000	
Dimattia, Elena	.000	18-1	3	6	0	0	0	0	0	0	.000	0	0	3	0	.000	0	0	2-2	0	0	0	.000	
Willis, Lacey	.000	6-0	0	4	0	0	0	0	0	0	.000	0	0	0	0	.000	0	0	2-2	0	0	0	.000	
Totals	.264	21	569	101	150	16	3	15	87	217	.381	70	13	104	2	.355	4	13	38-48	420	194	34	.948	
Opponents	.295	21	583	101	172	36	3	9	88	241	.413	50	11	68	1	.360	3	14	22-28	431	197	34	.949	

LOB - Team (139), Opp (142). DPs turned - Team (9), Opp (5). CI - Team (1), Cassel 1, Opp (1). IBB - Team (5), Love 5. Picked off - Olguin 1.

**(Sun Belt games only Sorted by Earned run avg)**

Player	era	w-l	app	gs	cg	sho	sv	ip	h	r	er	bb	so	2b	3b	hr	b/avg	wp	hp	bk	sfa	sha
Chastka, Jessica	2.72	3-0	6	0	0	0/0	0	18.0	19	9	7	5	6	2	0	1	.284	3	1	0	1	2
Mills, Tiffany	3.53	5-7	14	12	5	0/0	0	67.1	77	44	34	28	39	15	0	3	.277	3	4	1	0	9
Routzon, Stephanie	5.46	2-3	12	9	1	1/0	0	41.0	62	36	32	14	15	17	1	5	.348	2	2	0	1	3
-----																						
Fritz, Heather	4.10	0-1	9	0	0	0/0	1	13.2	14	12	8	3	8	2	2	0	.233	3	4	2	1	0
Totals	4.05	10-11	21	21	6	1/0	1	140.0	172	101	81	50	68	36	3	9	.295	11	11	3	3	14
Opponents	3.61	11-10	21	21	12	1/0	1	143.2	150	101	74	70	104	16	3	15	.264	13	13	0	4	13

PB - Team (4), Cassel 4, Opp (5). SBA/ATT - Cassel (22-28), Routzon (10-13), Mills (9-12), Fritz (3-3).



## ULM Game Highs

### BATTING

At bats:	40	at North Texas (Apr. 16)
Runs scored:	15	vs. Middle Tennessee (Mar. 27)
Hits:	15	vs. Middle Tennessee (Mar. 26)
	15	vs. Middle Tennessee (Mar. 27)
RBI's:	13	vs. Middle Tennessee (Mar. 27)
Doubles:	5	at Grambling State (Apr. 12)
Triples:	1	(eight times)
Home runs:	3	vs. Furman (Mar. 4)
Total bases:	28	vs. Furman (Mar. 4)
Walks:	8	vs. Georgia Southern (Mar. 5)
Strikeouts:	11	at Troy (Mar. 19)
Sac hits:	2	(five times)
Sac flies:	2	vs. Middle Tennessee (Mar. 27)
Stolen bases:	5	(four times)
Hit by pitch:	3	at Florida Atlantic (Apr. 2)
Caught stealing:	3	vs. Baylor (Feb. 26)
Runners LOB:	16	vs. Sam Houston State (Feb. 27)
Hit into DP:	2	vs. Southern Utah (Feb. 19)

### FIELDING

Putouts:	30	at North Texas (Apr. 16)
Assists:	16	vs. Eastern Illinois (Feb. 12)
Errors:	5	vs. Southern Utah (Feb. 19)
Passed balls:	1	(six times)
DPs turned:	2	at No. 7 Tennessee (Mar. 4)
	2	vs. FIU (Apr. 9)

### PITCHING

Innings pitched:	10.0	at North Texas (Apr. 16)
Runs allowed:	14	vs. No. 6 Oklahoma (Feb. 19)
Earned runs:	11	vs. No. 6 Oklahoma (Feb. 19)
	11	vs. Middle Tennessee (Mar. 27)
Walks allowed:	6	vs. South Alabama (Mar. 12)
	6	at Florida Atlantic (Apr. 2)
Strikeouts:	9	vs. Middle Tennessee (Mar. 27)
Hits allowed:	18	vs. Middle Tennessee (Mar. 27)
Doubles allowed:	5	at Troy (Mar. 19)
Triples allowed:	2	at Western Kentucky (Apr. 23)
Homers allowed:	3	vs. Sam Houston State (Feb. 18)
	3	vs. FIU (Apr. 9)
Wild pitches:	3	at Troy (Mar. 19)
Hit batters:	2	(five times)

## Individual Game Highs

### BATTING

At bats:	5	(10 times)
Runs scored:	4	Brianna Love vs. SE Missouri State (Feb. 11)
Hits:	4	Jessica Olguin at Troy (Mar. 19)
	4	Jessica Olguin vs. Middle Tennessee (Mar. 26)
RBI's:	6	Roxy Cassel vs. Middle Tennessee (Mar. 27)
Doubles:	3	Brianna Love at Grambling State (Apr. 12)
Triples:	1	(eight times)
Home runs:	1	(29 times)
Total bases:	7	Brianna Love vs. South Alabama (Mar. 13)
	7	Roxy Cassel vs. Middle Tennessee (Mar. 27)
	7	Brianna Love vs. Nicholls State (Mar. 31)
Walks:	3	Brianna Love vs. Sam Houston State (Feb. 27)
	3	Brianna Love at Troy (Mar. 20)
	3	Brianna Love vs. Middle Tennessee (Mar. 26)
Strikeouts:	4	Katie Girardi at Florida Atlantic (Apr. 3)
Sac hits:	1	(30 times)
Sac flies:	1	(nine times)
Stolen bases:	3	Brianna Love vs. SE Missouri State (Feb. 11)
	3	Brianna Love vs. Middle Tennessee (Mar. 26)
Hit by pitch:	1	(26 times)
Caught stealing:	1	(22 times)
Runners LOB:	8	Elise West at Florida Atlantic (Apr. 2)

### FIELDING

Putouts:	14	Katie Girardi vs. Eastern Illinois (Feb. 12)
Assists:	8	Tiffany Mills at No. 7 Tennessee (Mar. 4)
Errors:	3	Janel Salanoa at Stephen F. Austin (Mar. 9)
Passed balls:	1	(six times)

### PITCHING

Innings pitched:	10.0	Tiffany Mills at North Texas (Apr. 16)
Runs allowed:	10	Tiffany Mills vs. No. 6 Oklahoma (Feb. 19)
Earned runs:	7	Tiffany Mills vs. No. 6 Oklahoma (Feb. 19)
Walks allowed:	6	Tiffany Mills vs. South Alabama (Mar. 12)
Strikeouts:	7	Tiffany Mills vs. Middle Tennessee (Mar. 27)
	7	Tiffany Mills vs. Grambling State (Apr. 12)
	7	Stephanie Routzon vs. Grambling State (Apr. 19)
Hits allowed:	12	Tiffany Mills vs. No. 6 Oklahoma (Feb. 19)
Doubles allowed:	4	Stephanie Routzon at Troy (Mar. 19)
	4	Tiffany Mills at North Texas (Apr. 16)
Triples allowed:	2	Heather Fritz at Western Kentucky (Apr. 23)
Homers allowed:	2	(four times)
Wild pitches:	2	Tiffany Mills vs. No. 6 Oklahoma (Feb. 19)
	2	Stephanie Routzon at Troy (Mar. 19)
Hit batters:	2	(five times)

# Career Watch List

## BATTING AVERAGE

Name	AB	AVG
<b>1. Love, Brianna (08-11)</b>	<b>205-574</b>	<b>.357</b>
2. Tande, Lori (99-02)	242-706	.343
3. Boles, Stephanie (94-97)	233-695	.335
4. Goodman, Casey (00-03)	190-580	.328
5. Harris, Jackie (91-93)	171-534	.320

(minimum 250 AB)

## SLUGGING PERCENTAGE

Name	AB	SLG%
<b>1. Love, Brianna (08-11)</b>	<b>574</b>	<b>.693</b>
2. Tande, Lori (99-02)	706	.606
3. Goodman, Casey (00-03)	580	.600
4. Williams, Heather (04-07)	674	.497
5. Clampitt, Michelle (95-96)	314	.452

(minimum 250 AB)

## ON BASE PERCENTAGE

Name	AB	OB%
<b>1. Love, Brianna (08-11)</b>	<b>564</b>	<b>.470</b>
2. Dietz, Kristy (99-01)	458	.428
3. Goodman, Casey (00-03)	580	.411
4. Tande, Lori (99-02)	706	.399
5. Ward, Bette (81-82, 84)	267	.362

(minimum 250 AB)

## RUNS SCORED

Name	R
<b>1. Love, Brianna (08-11)</b>	<b>159</b>
2. Tande, Lori (99-02)	158
3. Baker, Kristen (02-05)	110
4. Dietz, Kristy (99-01)	107
5. Goodman, Casey (00-03)	106

## DOUBLES

Name	3B
1. Tande, Lori (99-02)	49
2. Williams, Heather (04-07)	42
3. Goodman, Casey (00-03)	37
<b>4. Love, Brianna (08-11)</b>	<b>36</b>
5. Baker, Kristen (02-05)	32

## TRIPLES

Name	3B
<b>1. Love, Brianna (08-11)</b>	<b>14</b>
1. Baker, Kristen (02-05)	14
3. Ward, Bette (81-82, 84)	11
3. Burrows, Kelly (91-92)	10
5. Aulds, Kathy (82, 84-85)	9
Harris, Jackie (91-93)	9
George, Millie (84-85)	9

## HOME RUNS

Name	HR
<b>1. Love, Brianna (08-11)</b>	<b>43</b>
2. Tande, Lori (99-02)	41
3. Goodman, Casey (00-03)	37
4. Williams, Heather (04-07)	34
5. Miller, Megan (06-09)	23

## RUNS BATTED IN

Name	RBI
1. Goodman, Casey (00-03)	147
2. Tande, Lori (99-02)	132
3. Williams, Heather (04-07)	130
<b>4. Love, Brianna (08-11)</b>	<b>111</b>
5. Boles, Stephanie (94-97)	79

## TOTAL BASES

Name	TB
1. Tande, Lori (99-02)	428
<b>2. Love, Brianna (08-11)</b>	<b>398</b>
3. Goodman, Casey (00-03)	348
4. Williams, Heather (04-07)	335
5. Boles, Stephanie (94-97)	264

## BASE ON BALLS

Name	BB
<b>1. Love, Brianna (08-11)</b>	<b>121</b>
2. Goodman, Casey (00-03)	85
3. Williams, Heather (04-07)	73
4. Dietz, Kristy (99-01)	71
5. Baker, Calli (05-08)	63

## SAVES

Name	SV
1. Rittenhouse, Lindsay (05-08)	9
2. Van Oosbree, Annie (99-02)	6
T3. Arnold, Clara (85-88)	5
<b>T3. Fritz, Heather (08-11)</b>	<b>5</b>

## STRIKEOUTS

Name	SO
1. Dawson, Sarah (94-97)	1280
2. Van Oosbree, Annie (99-02)	561
3. Causey, Kandace (07-10)	531
4. Rittenhouse, Lindsay (05-08)	517
5. Stewart, Wilanne (83-86)	333
<b>9. Fritz, Heather (08-11)</b>	<b>129</b>

## FIELDING PERCENTAGE

Name	C-PO-E	F%
1. McNeil, Molly (08-09)	(396-27-2)	.995
2. Miles, Stacy (97)	(322-23-3)	.991
3. Dryer, Cathy (87-88)	(839-83-9)	.990
4. Miller, Megan (06-09)	(367-38-5)	.988
5. Goodman, Casey (00-03)	(942-143-15)	.986
<b>10. Cassel, Roxy (09-11)</b>	<b>(513-74-10)</b>	<b>.980</b>

(minimum 250 IP)



# SOFTBALL

# TV/Radio Chart



**19**  
**Regina Ayala**  
 UT • 5-3 • Fr.  
 Norwalk, Calif.



**14**  
**Sarah Carriger**  
 IF/OF • 5-5 • Sr.  
 Claremore, Okla.



**13**  
**Roxy Cassel**  
 C/DP • 5-8 • Jr.  
 Deer Park, Texas



**16**  
**Jessica Chastka**  
 P • 5-8 • Jr.  
 College Station, Texas



**3**  
**Elena DiMattia**  
 OF • 5-4 • So.  
 Sunset, La.



**23**  
**Heather Fritz**  
 P • 5-10 • Sr.  
 Salina, Kan.



**24**  
**Katie Girardi**  
 IF/C • 5-8 • Jr.  
 Pembroke Pines, Fla.



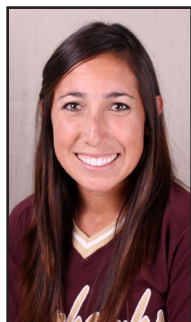
**4**  
**Brianna Love**  
 OF • 5-8 • Sr.  
 Garland, Texas



**22**  
**Tiffany Mills**  
 P • 5-11 • R-So.  
 Riverside, Calif.



**7**  
**Miyuki Navarrete**  
 OF • 5-6 • Fr.  
 San Jose, Calif.



**9**  
**Jessica Olguin**  
 IF • 5-5 • Sr.  
 Yorba Linda, Calif.



**10**  
**Charlotte Pastor**  
 IF • 5-3 • So  
 Metairie, La.



**17**  
**Samantha Riojas**  
 P • 5-11 • Fr.  
 Phoenix, Ariz.



**20**  
**Melissa Rivera**  
 OF • 5-3 • Sr.  
 Moreno Valley, Calif.



**12**  
**Stephanie Routzon**  
 P/IF • 6-0 • Fr.  
 Wheat Ridge, Colo.



**16**  
**Janel Salanoa**  
 IF • 5-5 • So.  
 San Jose, Calif.



**18**  
**Elise West**  
 IF • 5-8 • So.  
 Lafayette, La.



**2**  
**Lacey Willis**  
 UT • 5-2 • So.  
 Winnifield, La.



**Head Coach**  
**Rosemary Holloway-Hill**